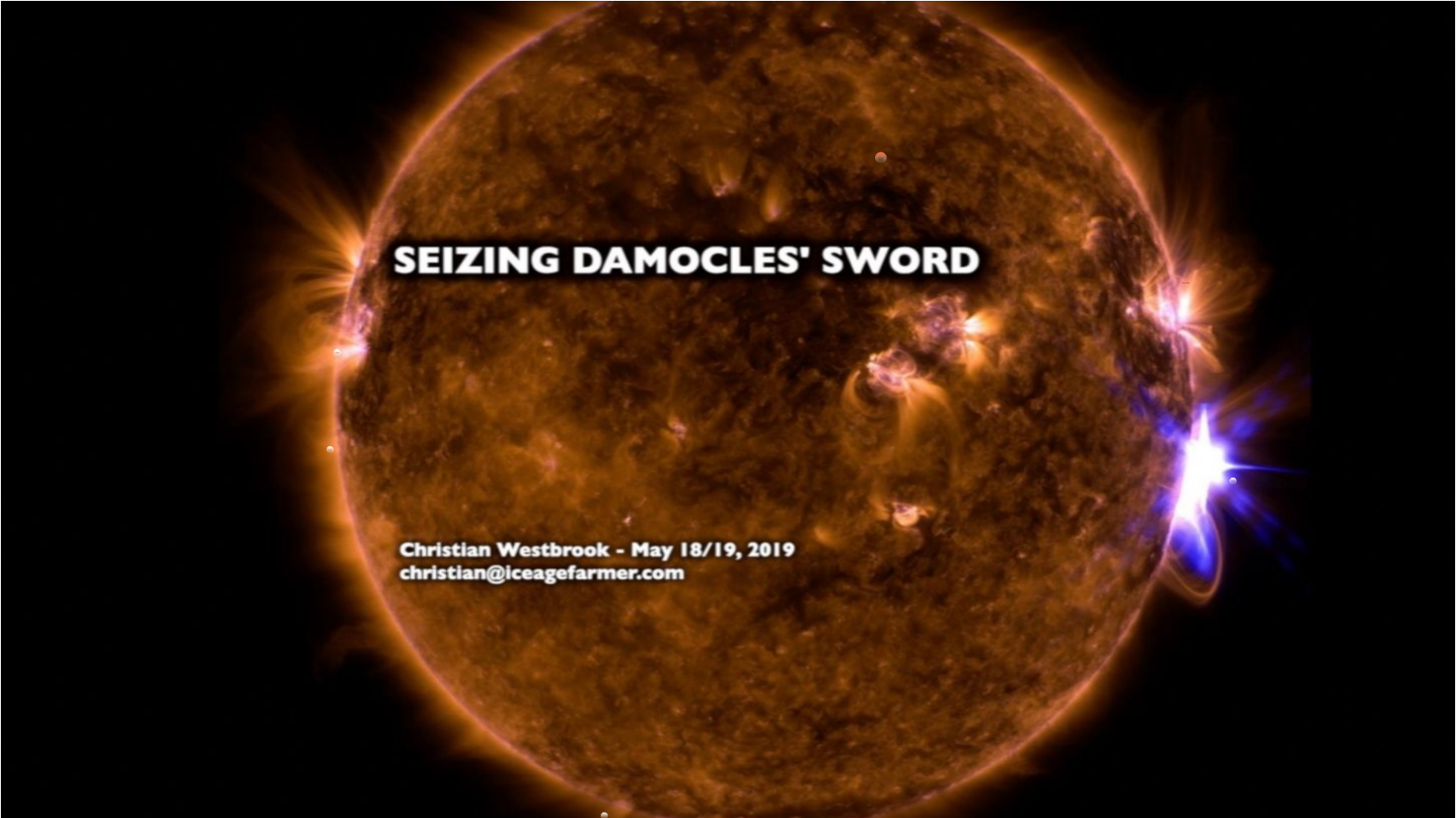
A large, textured orange sphere, possibly representing a planet or a celestial body, dominates the center of the image. The sphere has a mottled, cratered surface with several bright, glowing spots. To the right of the sphere, there is a bright blue light source, possibly a star or a distant galaxy, emitting a strong blue glow and lens flare. The background is black, making the orange sphere and blue light stand out prominently.

SEIZING DAMOCLES' SWORD

Christian Westbrook - May 18/19, 2019
christian@iceagefarmer.com

A large, textured orange sphere, possibly representing a planet or a celestial body, is the central focus. It has a mottled, cratered surface. Several bright spots are scattered across its surface, and a prominent blue starburst with multiple rays is located on the right side. The background is black.

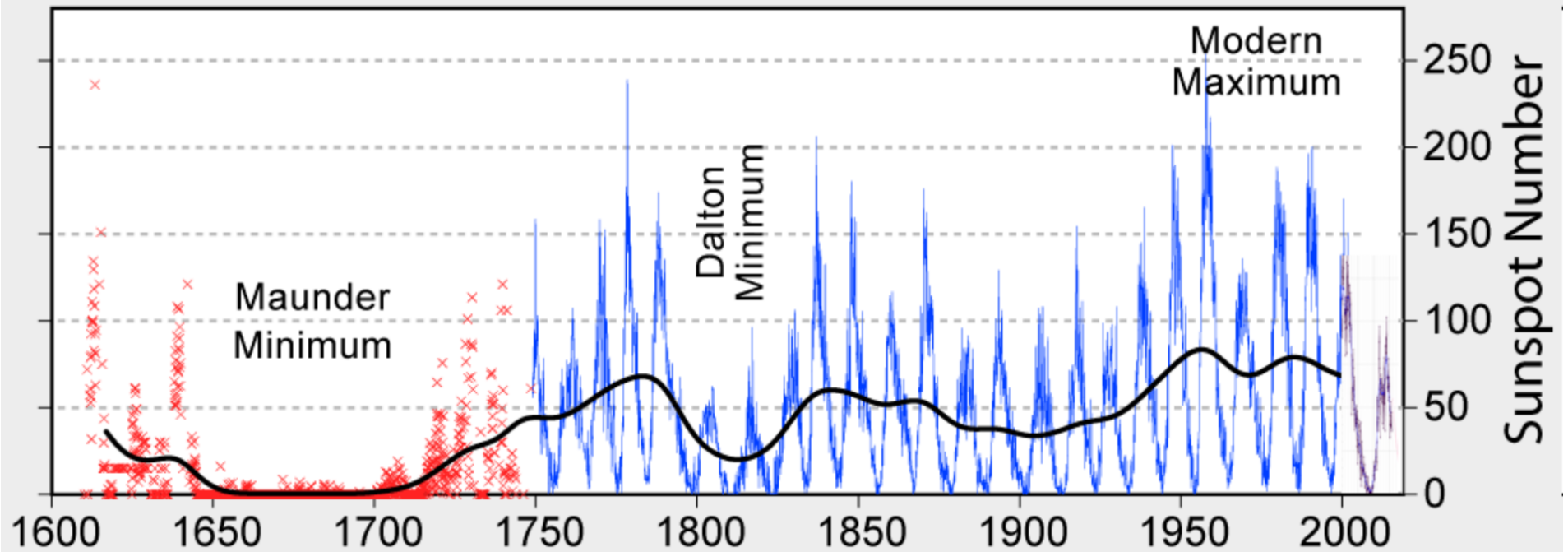
SEIZING DAMOCLES' SWORD

Christian Westbrook - May 18/19, 2019
christian@iceagefarmer.com

Who Are You?



400 Years of Sunspot Observations



Europe's Little Ice Age: 'All things which grew above the ground died and starved'



The early Spörer Minimum – a period of extraordinary climate and socio-economic changes in Western and Central Europe

2019

Deadly swine fever spreads across all China, threatening massive pork shortage

Published time: 22 Apr, 2019 21:32

Iran says recent floods caused up to \$2.5 billion in damage

REUTERS Reuters · April 14, 2019

Farm losses drive Iowa's flood damage to \$2 billion, Farm Bureau economists estimate

Donnelle Eller, Des Moines Register Published 2:49 p.m. CT April 3, 2019

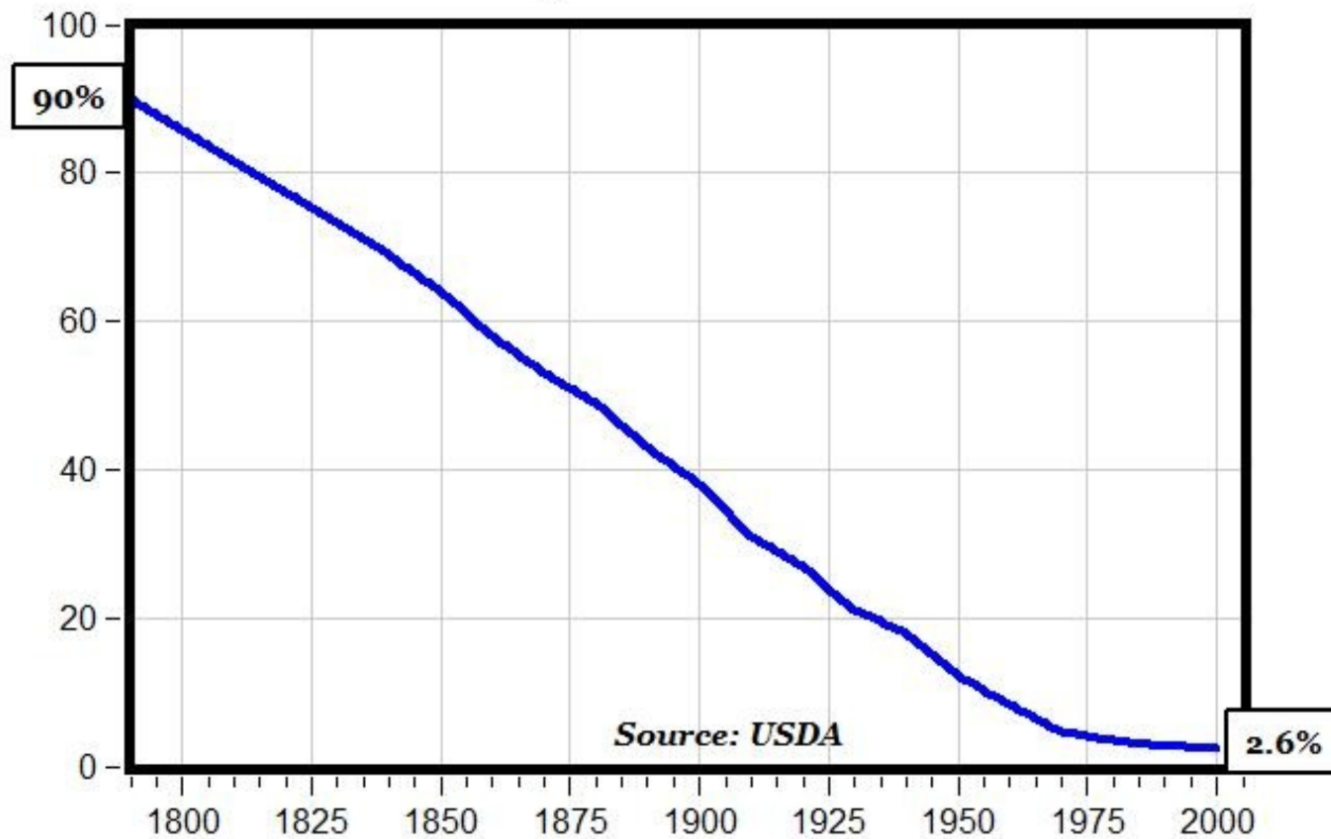
Drought wipes billions from Australian farm production

[Share on Facebook](#) [Share on Twitter](#) [Print](#) [Email](#) [More](#)

ABC Rural By national rural reporter [Kath Sullivan](#)

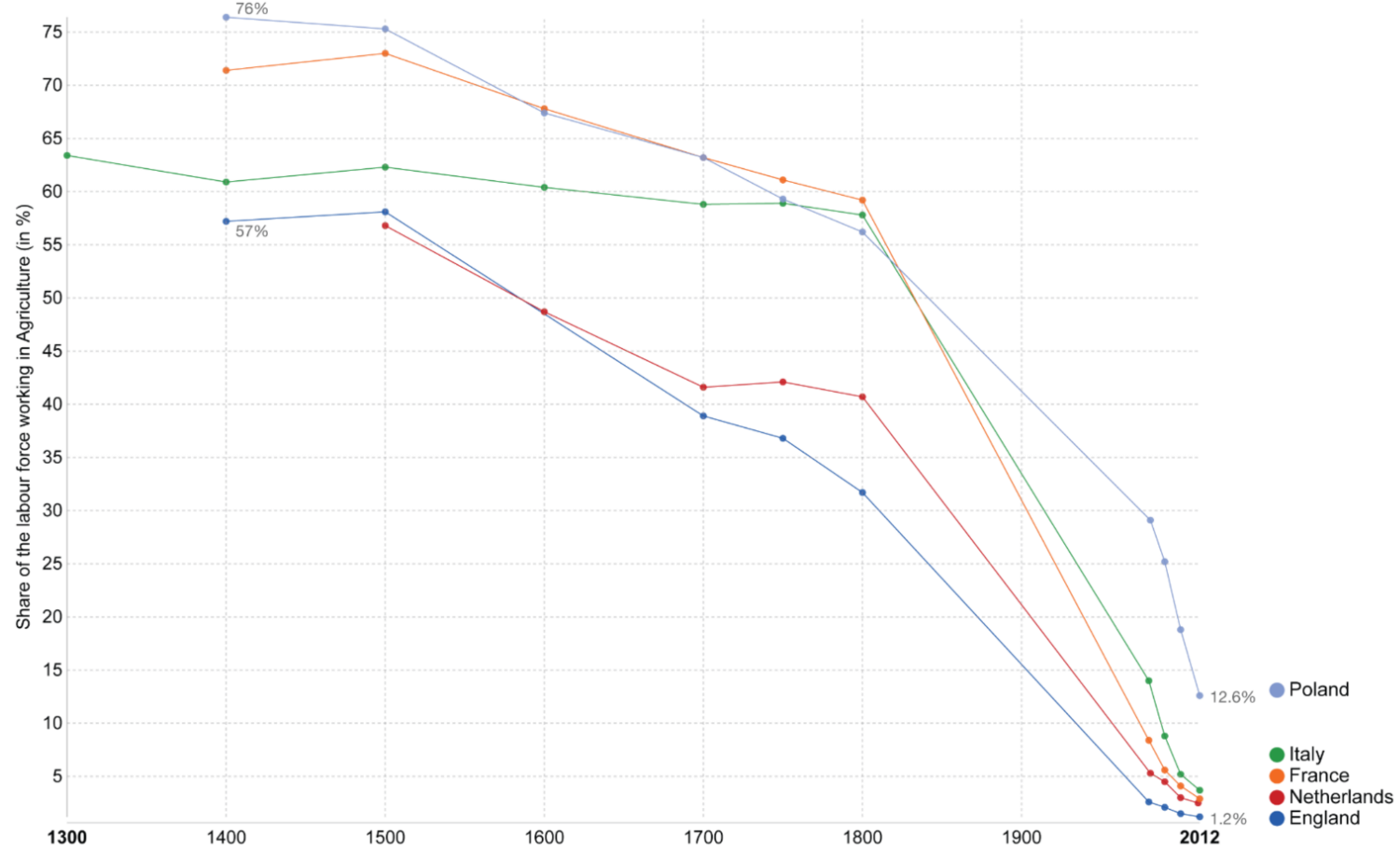
Posted 4 March 2019 at 5:01 am

Farm Jobs, % of Total U.S. Jobs 1790 to 2000



Europe

Share of the labor force working in agriculture, since 1300 – By Max Roser



Data source: Pre 1800 is from Allen (2000), "Economic Structure and Agricultural Productivity in Europe, 1300-1800". Newer data from the World Bank. The interactive data visualization is available at OurWorldinData.org. There you find the raw data and more visualizations on this topic.

Licensed under CC-BY-NC-SA by the author Max Roser.

Crop Losses



Ice Age Farmer: Grand Solar Minimum Crop Loss Map

Modern agriculture is at risk due to cyclical changes in our sun's output that drive climate change on our planet.

This page tracks crop losses to the [Grand Solar Minimum](#): hail, storms, flooding, drought, early/late frosts...

Made possible by my [Patreon supporters](#) -- consider supporting my work! Thanks.

[Contact / Submit News](#)



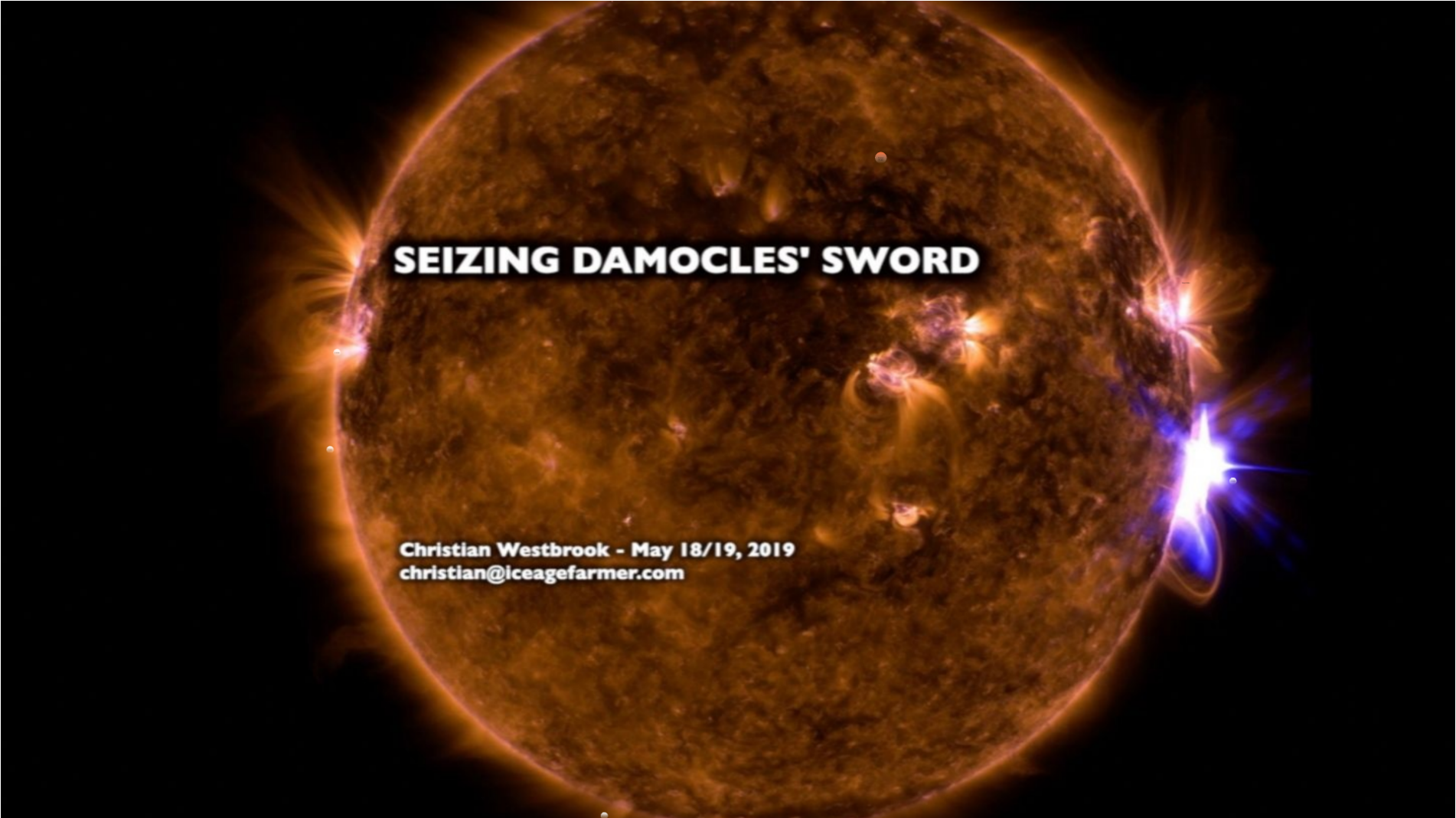
FEATURES | 7 September 2018 © 12:02

Exclusive: BBC issues internal guidance on how to report climate change



"... all part of the plan ..."





SEIZING DAMOCLES' SWORD

Christian Westbrook - May 18/19, 2019
christian@iceagefarmer.com

Damocles' Sword(s)



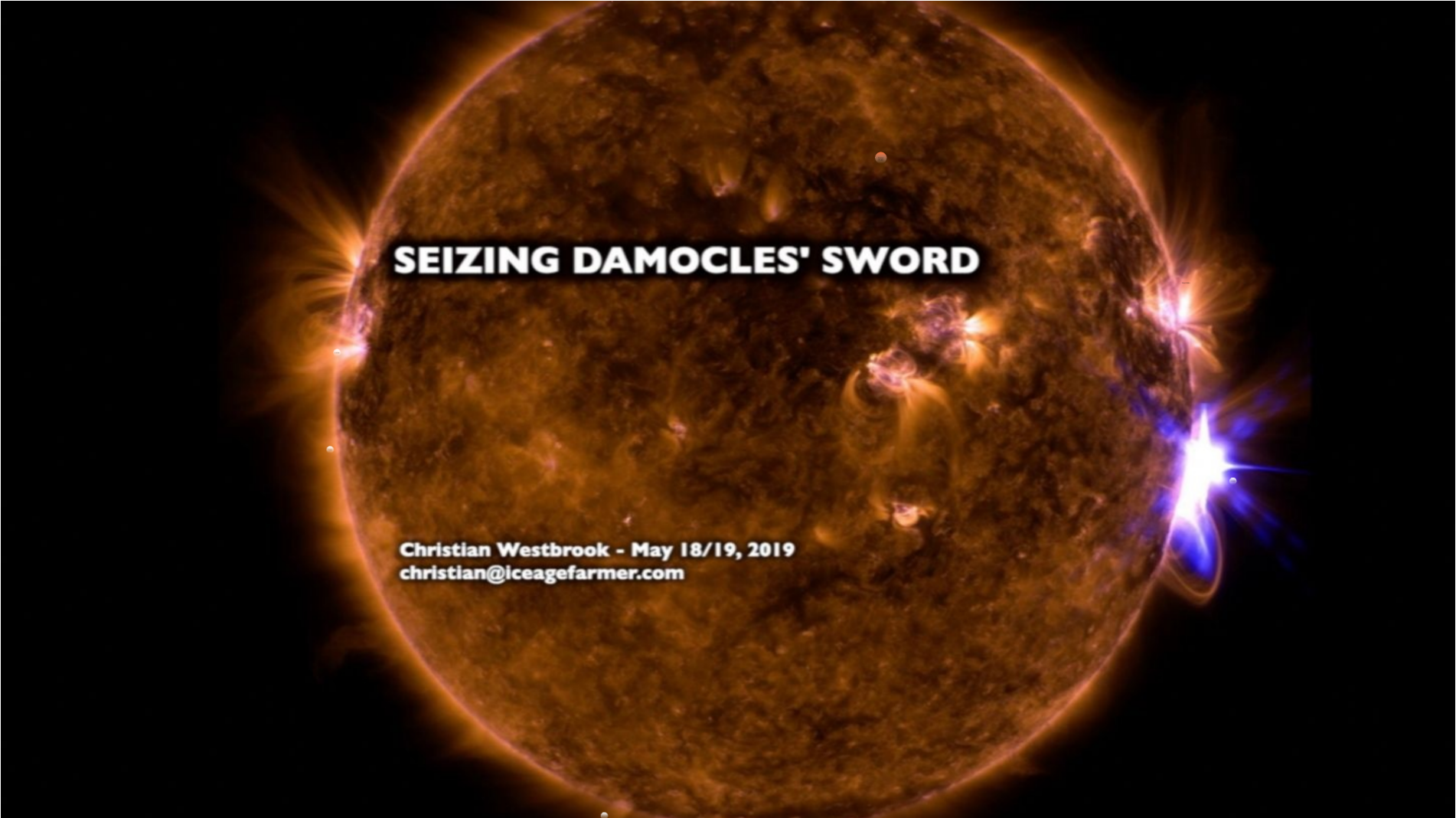
SEIZE
THEM!

Seizing the Swords

Myriad imminent existential threats.

How do we turn this into a good thing?





SEIZING DAMOCLES' SWORD

Christian Westbrook - May 18/19, 2019
christian@iceagefarmer.com



CENSORED



Channel: Natural News

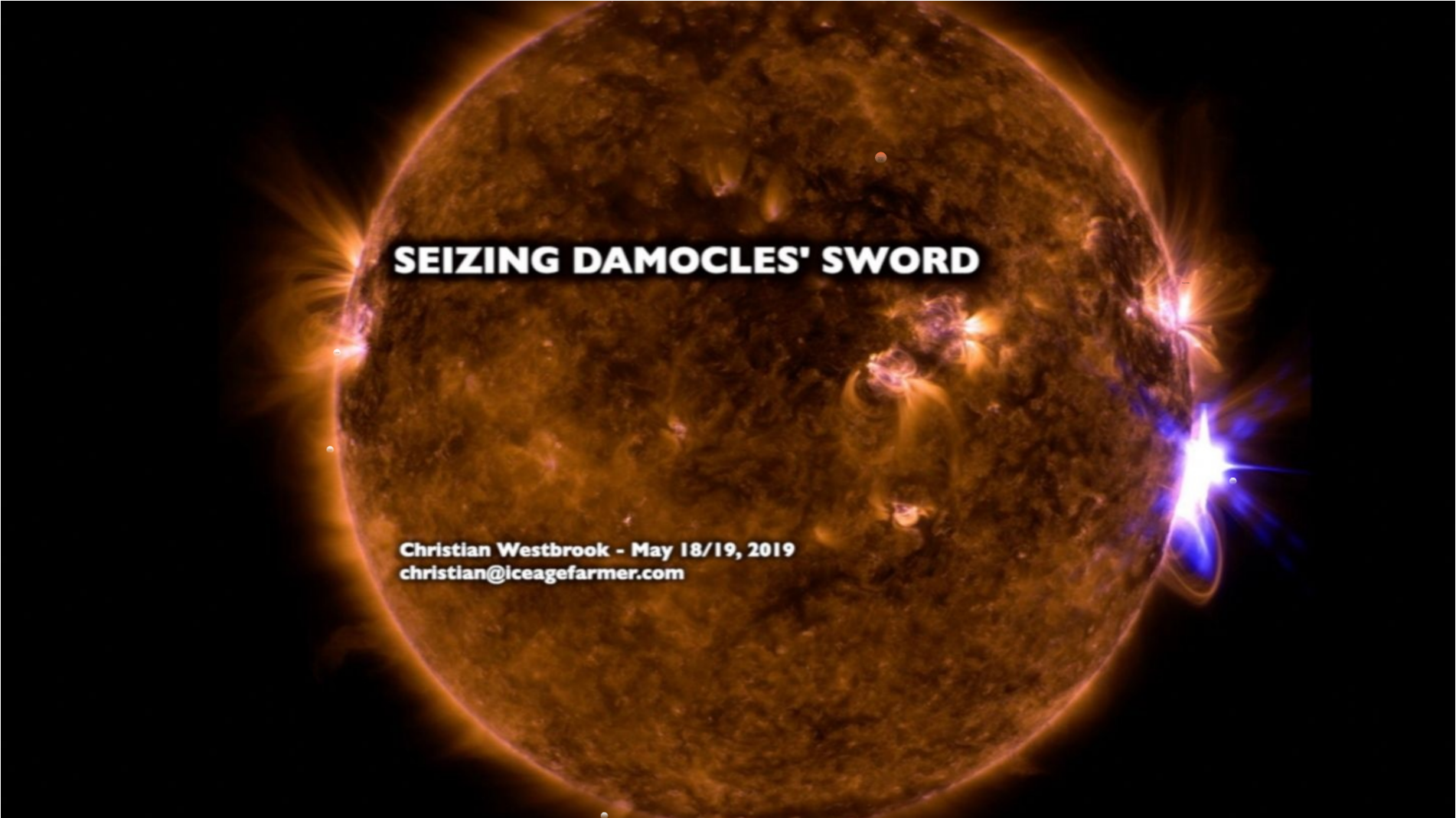
Website: <http://www.naturalnews.com>

Dear [REDACTED]

Your channel has been disabled, and your content has been removed from Apple News. Your channel didn't comply with our Apple News guidelines:

- Content advocates views overwhelmingly rejected by the scientific community.

Regards,
The Apple News Team



SEIZING DAMOCLES' SWORD

Christian Westbrook - May 18/19, 2019
christian@iceagefarmer.com

Geomagnetic Field and Human Health



Cosmic Ray Alerts

SAFE ZONE

Geomagnetic Storm Alerts

0 1 2 3 4 5 6 7 8 9

Geomagnetic Score (KP Index)

Geomagnetic Storm Risks

- Heart Rate Fluctuations
- Heart Attacks/Strokes of All Kinds
- Acute Coronary Syndrome*
- Blood Pressure Increase
- Seizure, Migraine Risk
- Anxiety/Stress/Emotional Instability/
Cognitive Diminution
- Suicide Risk, Mental Disorder Flare-Up
- Radiation Risk**

*Alert for diabetic patients and those with metabolic disorders.

**For Airline Passengers in High Latitudes

Cosmic Ray Risks

- Acute Myocardial Infarction*
- Cerebral Stroke*
- Terminal Arrhythmia*
- Anxiety/Stress/Emotional Instability/
Cognitive Diminution (uptick in Traffic
Accidents, Work injuries)
- Suicide Risk, Mental Disorder Flare-Up
- Radiation Risk**

*Enhanced alert for those with ventricular dysfunction or ischemic cardiomyopathy.

**For Airline Passengers in High Latitudes

Solar Flare Risks*

- Flare-Ups in: Migraines, Digestive Disorders, Skin Conditions (including those related to STDs)
- Visual Impairment, Reaction Time Diminution
- Emotional Instability
- Radiation Risk**

*Solar Flare Notifications Must be Enabled. Click the Alerts tab at the bottom of the App screen, then the alarm-bell in the top-right; enable Alerts

**For Airline Passengers in High Latitudes



Humans have a Geomagnetic Sensory System as do many other Animals

These are a few of the organisms with geomagnetic sensitivity



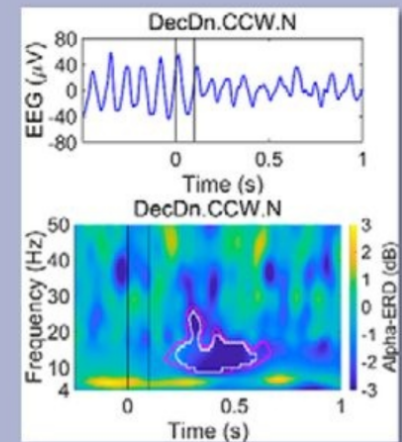
Humans are animals, too, so ...

We built a special exposure chamber to test human brain waves for magnetic effects ..



We included *many* experimental controls and blinding steps

We found that alpha waves in our brains fade after specific field rotations ...



... and that the sensor is likely magnetite, a biomineral that transduces magnetic fields.

HeartMath

Long-Term Study of Heart Rate Variability Responses to Changes in the Solar and Geomagnetic Environment

Abdullah Alabdulgader, Rollin McCraty, Michael Atkinson, York Dobyns, Alfonsas Vainoras, Minvydas Ragulskis & Viktor Stolic

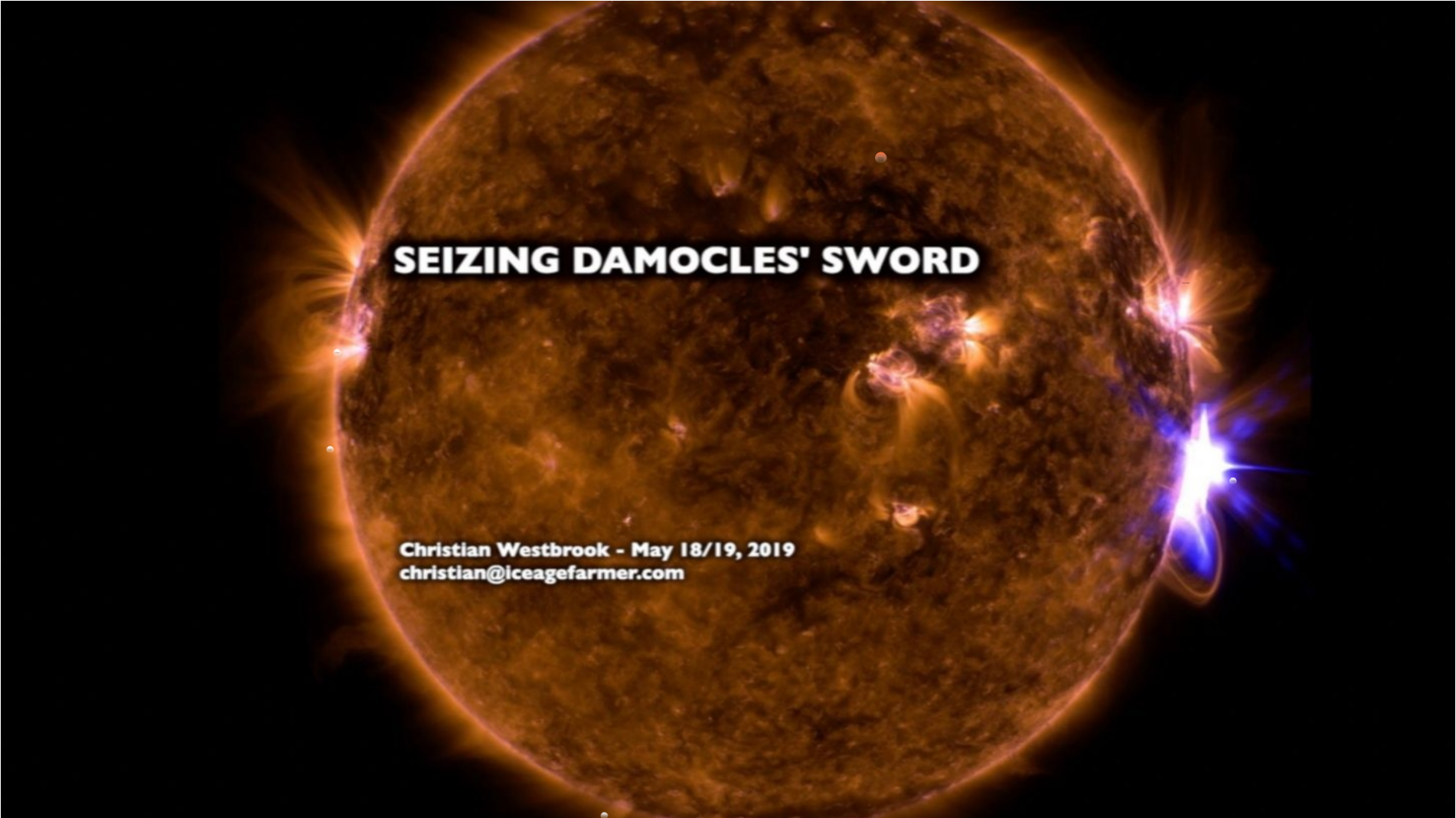
Scientific Reports volume 8, Article number: 2663 (2018) | Download Citation

Abstract

This long-term study examined relationships between solar and magnetic factors and the time course and lags of autonomic nervous system (ANS) responses to changes in solar and geomagnetic activity. Heart rate variability (HRV) was recorded for 72 consecutive hours each week over a five-month period in 16 participants in order to examine ANS responses during normal background environmental periods. HRV measures were correlated with solar and geomagnetic variables using multivariate linear regression analysis with Bonferroni corrections for multiple comparisons after removing circadian influences from both datasets. Overall, the study confirms that daily ANS activity responds to changes in geomagnetic and solar activity during periods of normal undisturbed activity and it is initiated at different times after the changes in the various environmental factors and persist over varying time periods. Increase in solar wind intensity was correlated with increases in heart rate, which we interpret as a biological stress response. Increase in cosmic rays, solar radio flux, and Schumann resonance power was associated with increased HRV and parasympathetic activity. The findings support the hypothesis that energetic environmental phenomena affect psychophysical processes that can affect people in different ways depending on their sensitivity, health status and capacity for self-regulation.

Abstract

This long-term study examined relationships between solar and magnetic factors and the time course and lags of autonomic nervous system (ANS) responses to changes in solar and geomagnetic activity. Heart rate variability (HRV) was recorded for 72 consecutive hours each week over a five-month period in 16 participants in order to examine ANS responses during normal background environmental periods. HRV measures were correlated with solar and geomagnetic variables using multivariate linear regression analysis with Bonferroni corrections for multiple comparisons after removing circadian influences from both datasets. Overall, the study confirms that daily ANS activity responds to changes in geomagnetic and solar activity during periods of normal undisturbed activity and it is initiated at different times after the changes in the various environmental factors and persist over varying time periods. Increase in solar wind intensity was correlated with increases in heart rate, which we interpret as a biological stress response. Increase in cosmic rays, solar radio flux, and Schumann resonance power was all associated with increased HRV and parasympathetic activity. The findings support the hypothesis that energetic environmental phenomena affect psychophysical processes that can affect people in different ways depending on their sensitivity, health status and capacity for self-regulation.

A large, textured orange sphere, possibly representing a planet or a celestial body, dominates the center of the image. The sphere has a mottled, cratered surface with several bright, glowing spots. To the right of the sphere, there is a bright blue-white light source, possibly a star or a distant galaxy, emitting a lens flare effect. The background is black.

SEIZING DAMOCLES' SWORD

Christian Westbrook - May 18/19, 2019
christian@iceagefarmer.com

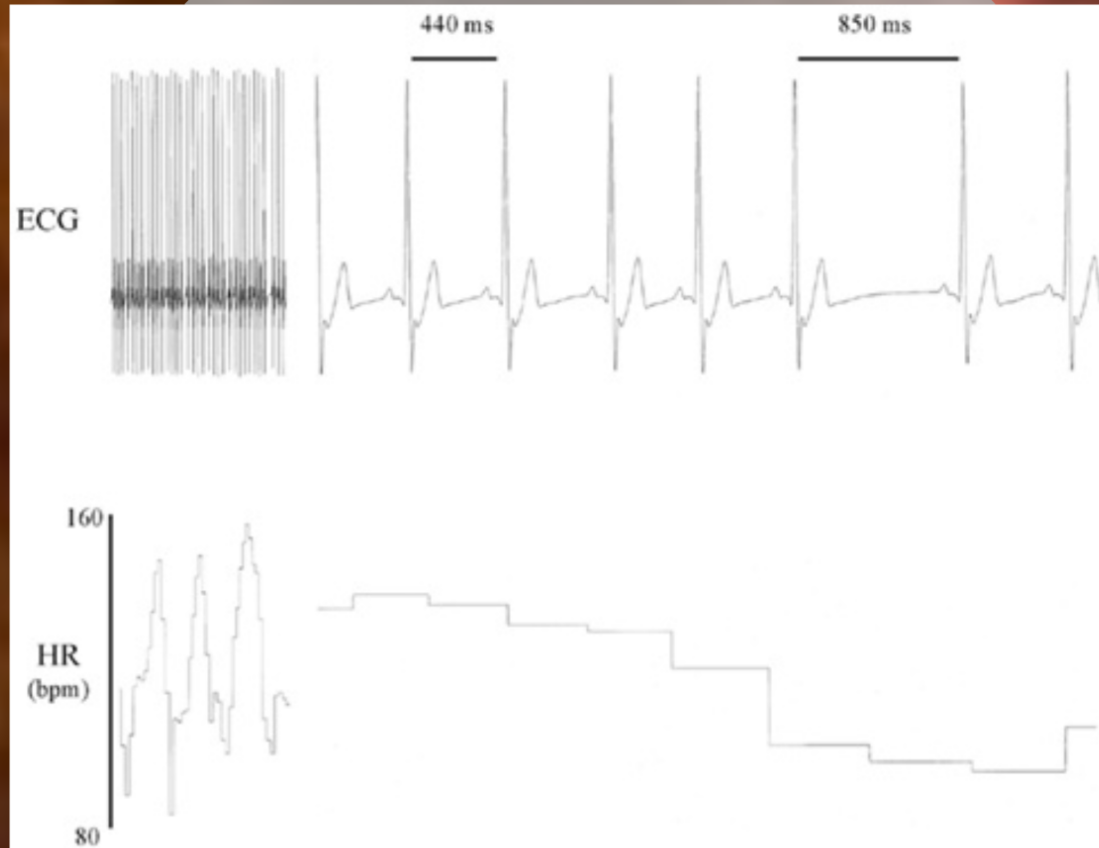
+♥ HeartMath.

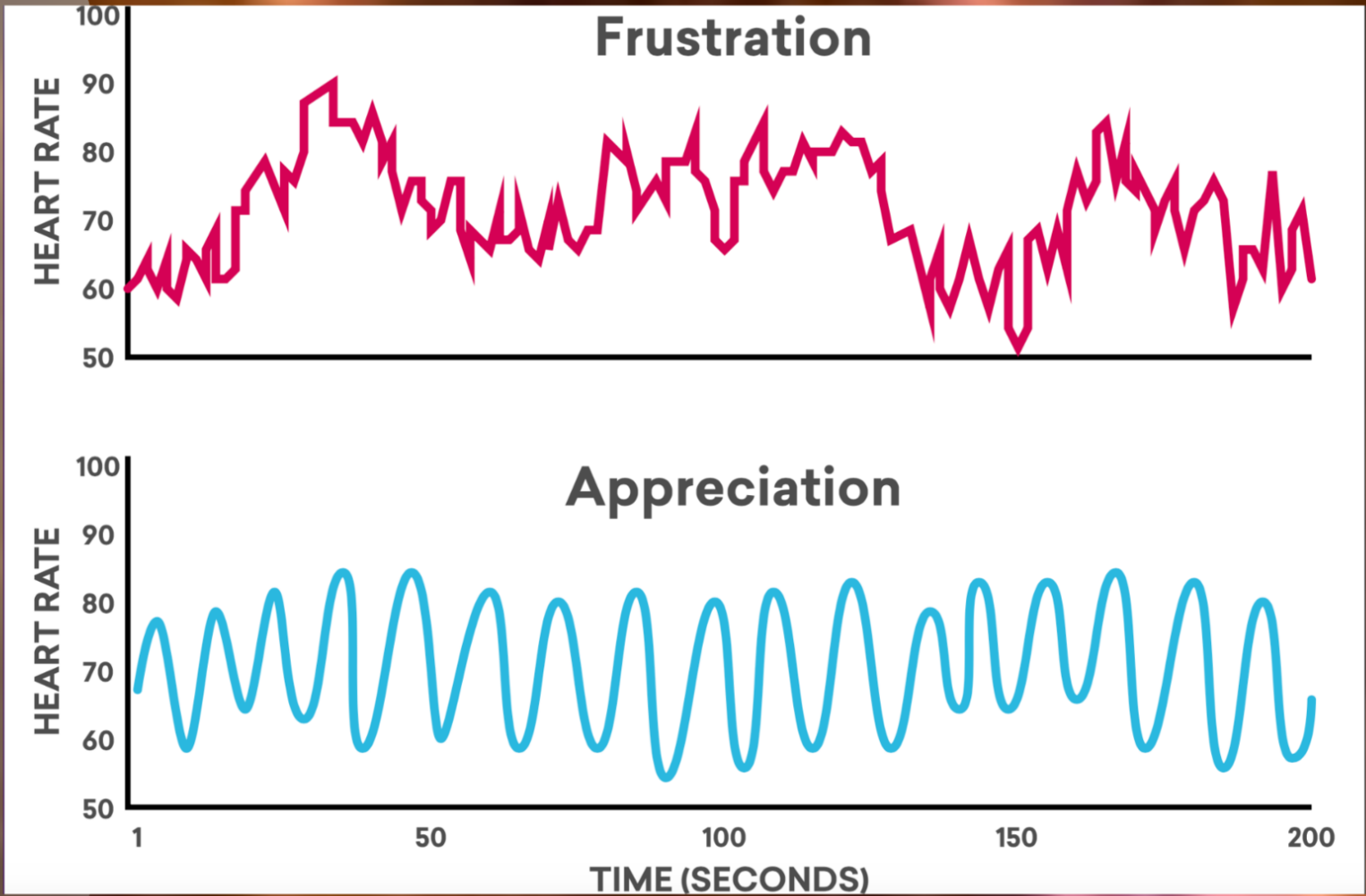


HRV

So?

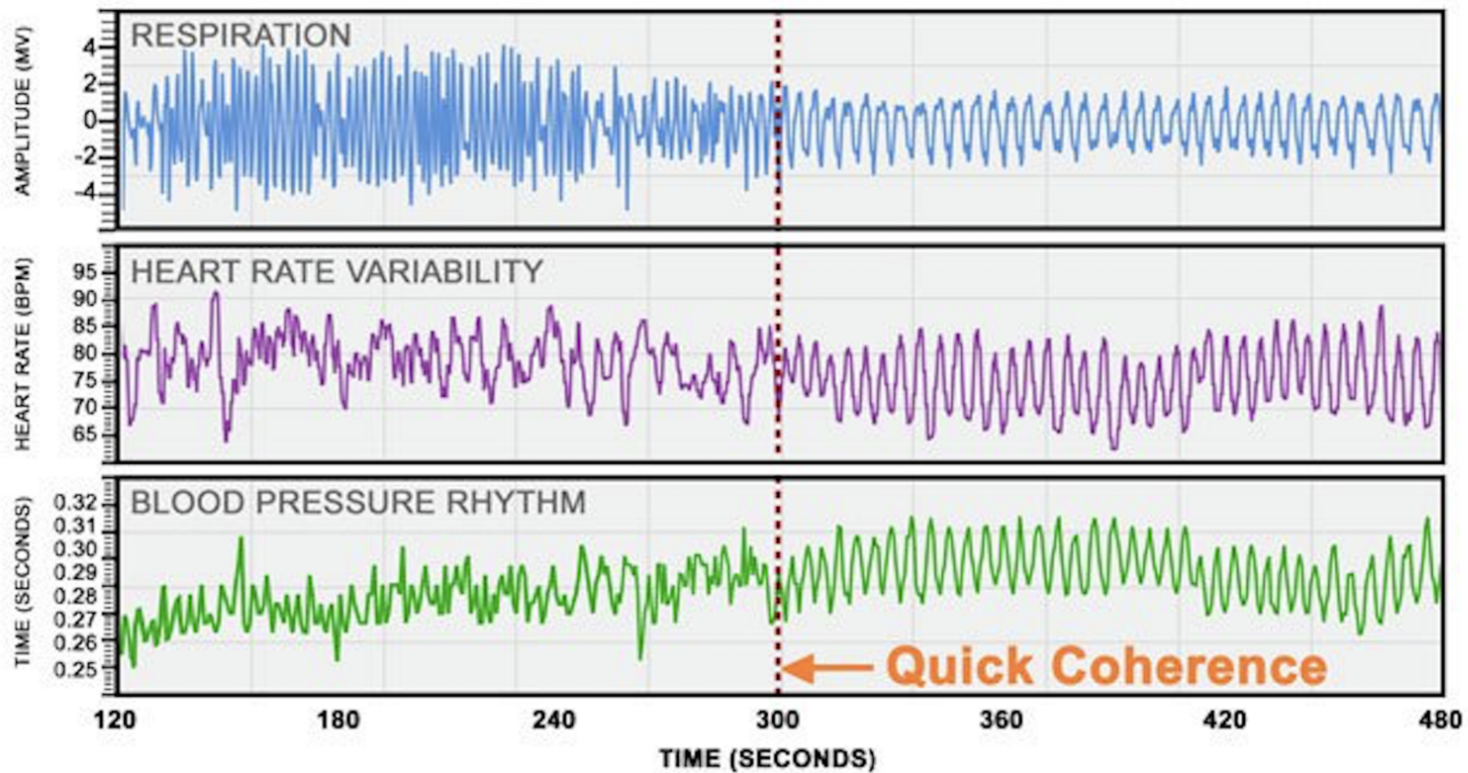
Heart Rate Variability

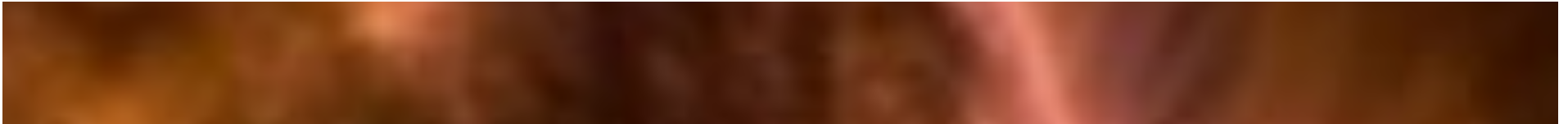




Physiological Coherence

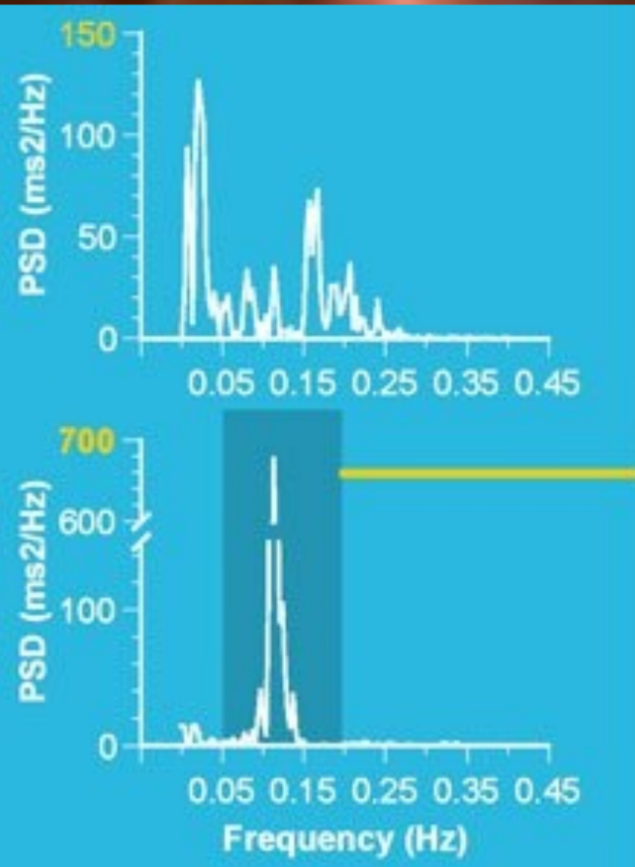
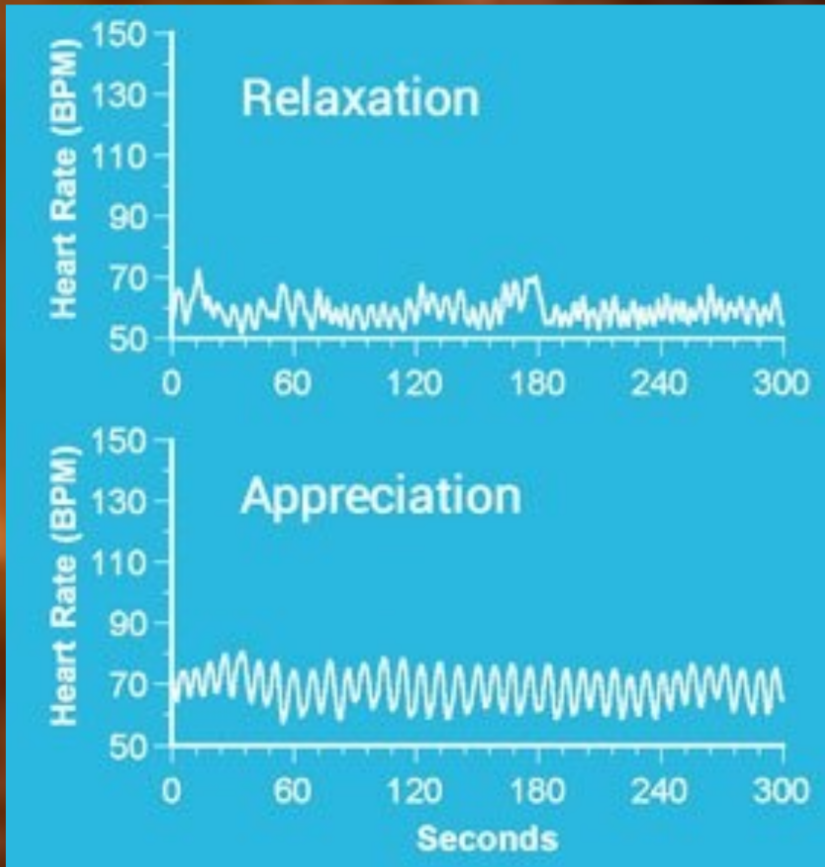
A state of emotional and physiological well-being. Parasympathetic.






“In states of psychophysiological coherence, there is increased synchronization and harmony between the cognitive, emotional and physiological systems, resulting in efficient and harmonious functioning of the whole. ... Studies conducted across diverse populations have linked the capacity to self-generate and sustain psychophysiological coherent states at will with numerous benefits.”

Among the observed benefits participants in HeartMath’s studies have exhibited are the ability to build resilience, which enables us to effectively manage stressful situations and recover from them more quickly, with our energy reserve intact. Study participants also have experienced substantial improvement in cognitive function such as long- and short-term memory, increased ability to focus and process information and an overall improvement in learning.



Global synchronization – the optimal state for health and learning

Identification of a Group's Physiological Synchronization with Earth's Magnetic Field

Inga Timofejeva¹, Rollin McCraty², Mike Atkinson², Roza Joffe³, Alfonsas Vainoras⁴, Abdullah A. Alabdulgader⁵ and Minvydas Ragulskis^{6,*} 

¹ Department of Mathematical Modelling, Kaunas University of Technology, 51368 Kaunas, Lithuania; inga.timofejeva@ktu.edu

² HeartMath Institute, Boulder Creek, CA 95006, USA; rollin@heartmath.org (R.M.); mike@heartmath.org (M.A.)

³ Health Research Institute, Lithuanian University of Health Sciences, 50009 Kaunas, Lithuania; joffero@gmail.com

⁴ Cardiology Institute, Lithuanian University of Health Sciences, 44307 Kaunas, Lithuania; alfavain@gmail.com

⁵ Research and Scientific Bio-Computing, Prince Sultan Cardiac Center, Alhasa, Hofuf 31982, Saudi Arabia; kidsecho@yahoo.com

⁶ Department of Mathematical Modelling, Kaunas University of Technology, 51368 Kaunas, Lithuania

* Correspondence: minvydas.ragulskis@ktu.lt; Tel.: +370-(698)-22-456

Received: 15 July 2017; Accepted: 30 August 2017; Published: 1 September 2017

5. Conclusions

The results of this study are consistent with other studies showing that daily autonomic nervous system activity responds to changes in geomagnetic activity. It also confirms these findings in a larger group and by using a different analysis approach; i.e., the observation of slow wave dynamics occurring in people's heart rhythms over many hours to days. In addition, it also confirms the surprising degree of synchronized activity between the slow wave dynamics in heart rhythms and changes in the Earth's time-varying magnetic field in a frequency range that includes both Schumann resonances and geomagnetic field line resonances, which have similar frequencies as the rhythms produced by human brains and hearts.

The Electricity of Touch: Detection and measurement of cardiac energy exchange between people

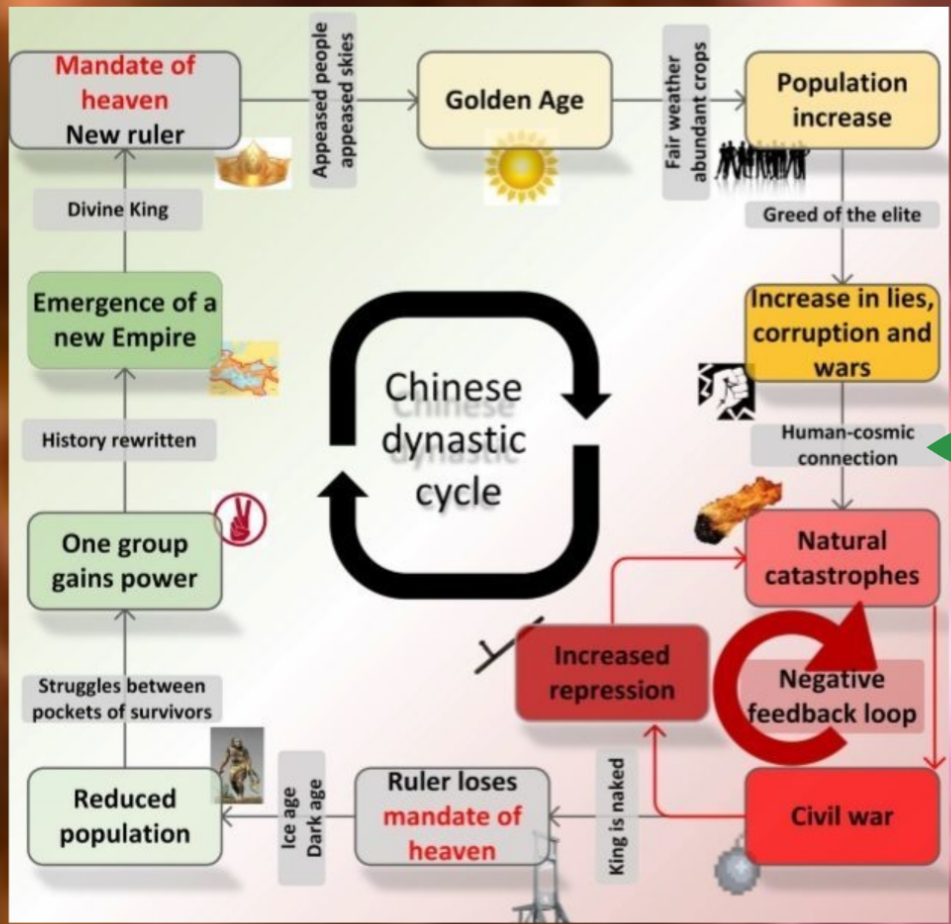
Rollin McCraty, PhD, Mike Atkinson, Dana Tomasino, BA and William A. Tiller, PhD

Summary

The idea that an energy exchange of some type occurs between individuals is a central theme in many healing techniques. This concept has often been disputed by Western science due to the lack of a plausible mechanism to explain the nature of this energy or how it could affect or facilitate the healing process. The fact that the heart generates the strongest electromagnetic field produced by the body, coupled with the recent discovery that this field becomes more coherent as the individual shifts to a sincerely loving or caring state prompted us to investigate the possibility that the field generated by the heart may significantly contribute to this energy exchange.

We present a sampling of results which provide intriguing evidence that an exchange of electromagnetic energy produced by the heart occurs when people touch or are in proximity. Signal averaging techniques are used to show that one's electrocardiogram (ECG) signal is registered in another person's electroencephalogram (EEG) and elsewhere on the other person's body. While this signal is strongest when people are in contact, it is still detectable when subjects are in proximity without contact.

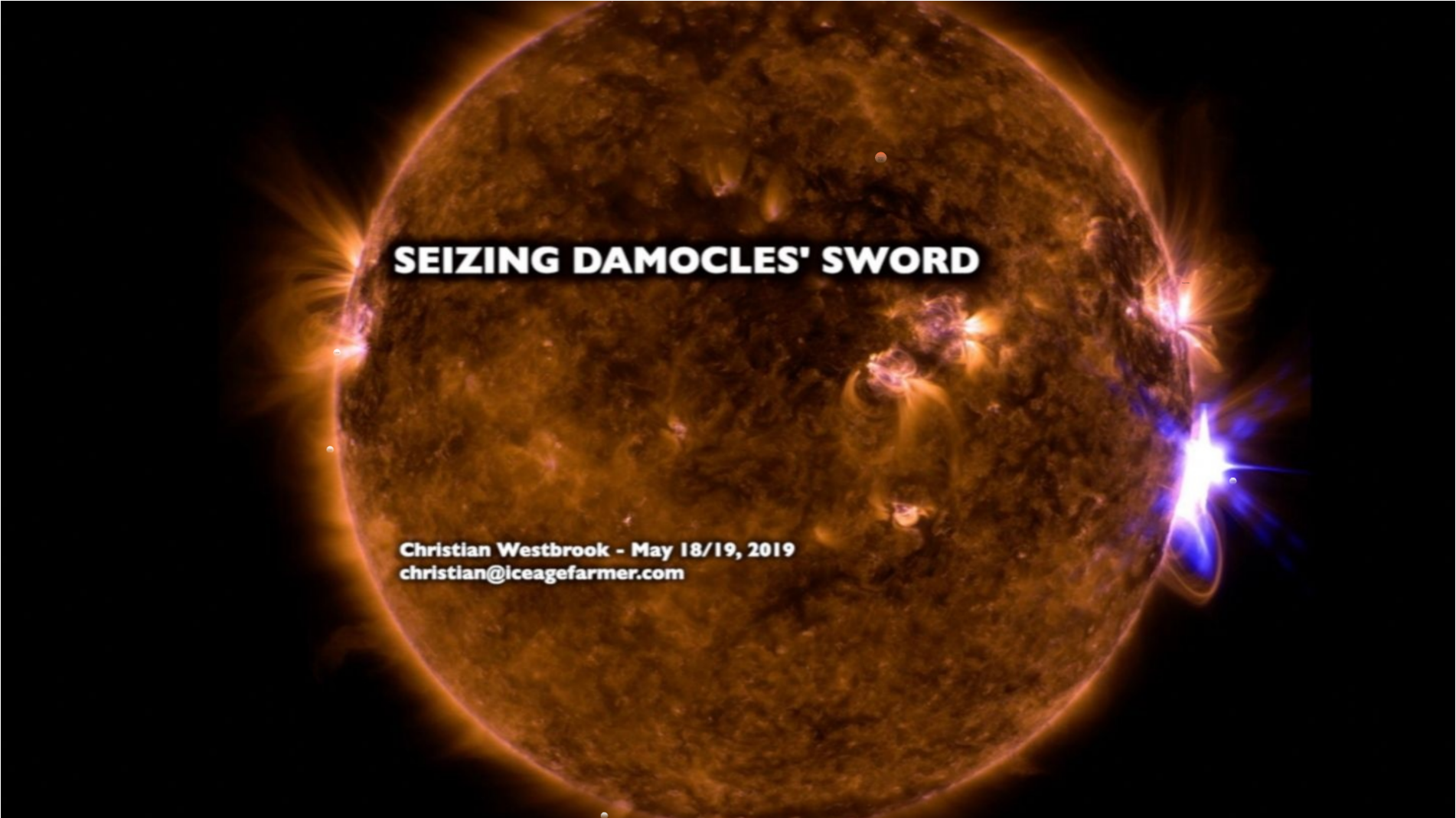
This study represents one of the first successful attempts to directly measure an energy exchange between people, and provides a solid, testable theory to explain the observed effects of many healing modalities that are based upon the assumption that an energy exchange takes place. Nonlinear stochastic resonance is discussed as a mechanism by which weak, coherent electromagnetic fields, such as those generated by the heart of an individual in a caring state, may be detected and amplified by biological tissue, and potentially produce measurable effects in living systems. One implication is that the effects of therapeutic techniques involving contact or proximity between practitioner and patient could be amplified by practitioners consciously adopting a sincere caring attitude, and thus introducing increased coherence into their cardiac field.



Earth Changes and the Human-Cosmic Connection
 Pierre Lescaudron


So?



A large, textured orange sphere, possibly representing a planet or a celestial body, dominates the center of the image. The sphere has a mottled, cratered surface with various shades of brown and orange. Several bright, glowing spots are scattered across its surface. To the right of the sphere, there is a bright, blue-white light source that creates a lens flare effect, extending towards the right edge of the frame. The background is a dark, almost black space.

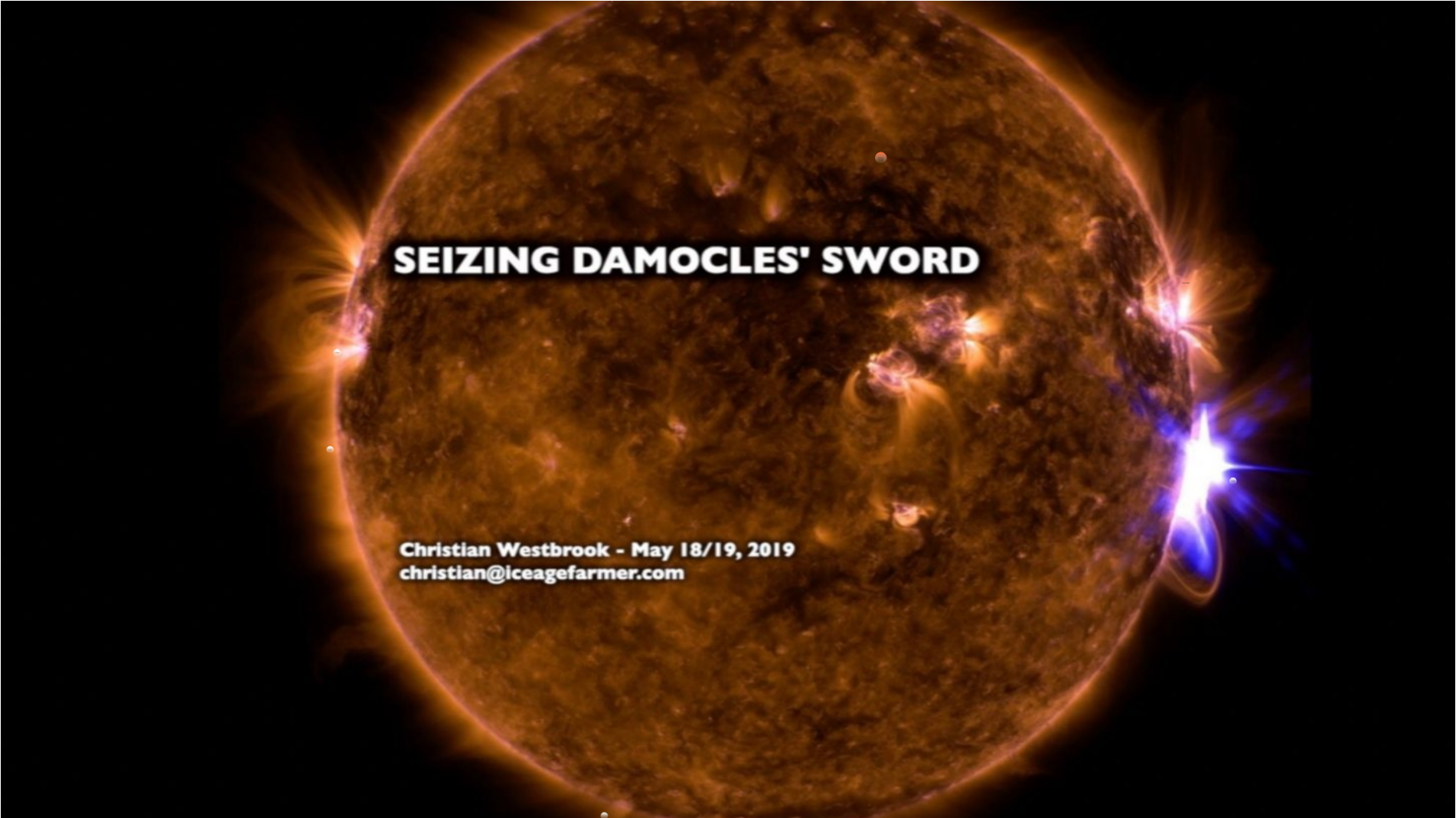
SEIZING DAMOCLES' SWORD

Christian Westbrook - May 18/19, 2019
christian@iceagefarmer.com



"Language is the
instrument of empire."

Antonio de Nebrija to Queen Isabella, 1492

A large, textured orange sphere, possibly representing a planet or a celestial body, dominates the center of the image. The sphere has a mottled, cratered surface. Several bright spots are scattered across its surface, and a prominent blue-white light source is visible on the right side, creating a lens flare effect. The background is black.

SEIZING DAMOCLES' SWORD

Christian Westbrook - May 18/19, 2019
christian@iceagefarmer.com

Qi/chi, ki, prana, Ruah (Hebrew), Mana (HI)

Reichenbach: Odic Force

Wilhelm Reich: Orgone

Pythagoras: Vital Energy

Mesmer: Magnetic fluid

Radiesthesia: Etheric force

Eeman: X-Force

George De La Warr: Emanations

Burr/Northrop: Life field

Victor Inyushin: Bio-field

Robert Becker: Schumann waves

Russians: Bio-plasmic energy



Reiki

Reiki

Becker/Zimmerman:

Practitioner / Receiver sync EEG to Alpha

Pulse in unison with Schumann resonance

Magnetic field around hands strenghtens
1000x

Reiki

Krinsley D. Bengston

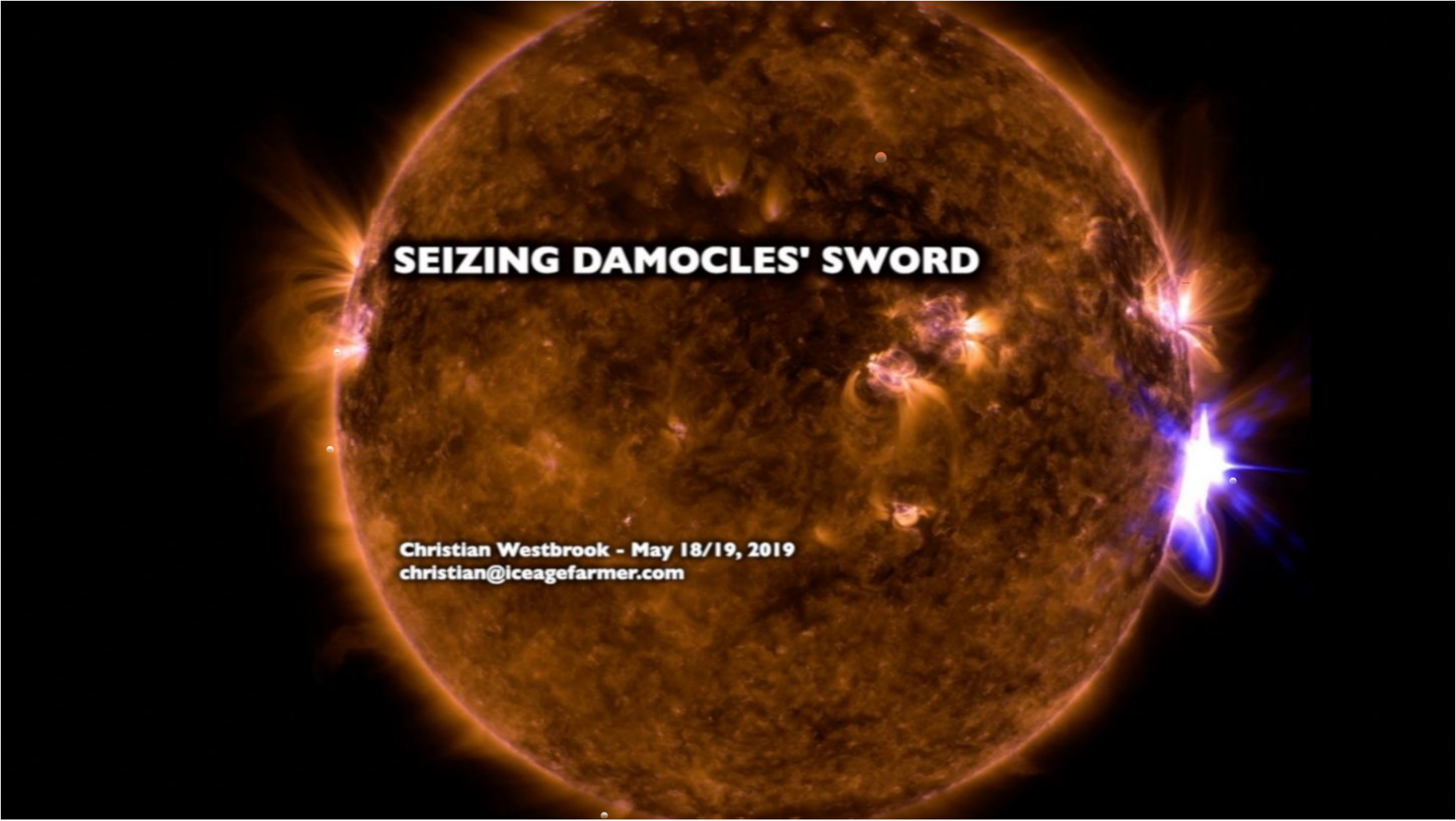
Double blind studies with mice.

Cancer (adenocarcinoma):

87.9% of the energy-treated mice lived,
100% of the control group mice died

Lasting effect:

Reinjected with cancer, not treated, fine.

A large, textured orange sphere, possibly representing a planet or a celestial body, dominates the center of the image. The sphere has a mottled, cratered surface. Several bright spots are scattered across its surface, and a prominent blue-white light source is visible on the right side, creating a lens flare effect. The background is black.

SEIZING DAMOCLES' SWORD

Christian Westbrook - May 18/19, 2019
christian@iceagefarmer.com

Consciousness
is non-local

"I regard consciousness as fundamental. I regard matter as derivative from consciousness. We cannot get behind consciousness. Everything that we talk about, everything that we regard as existing, postulates consciousness."

- Max Planck, Nobel prize winning physicist

Reality as a Mass Shared Dream

... and a function of our collective
beliefs.

*"I wouldn't have seen it if I
hadn't believed it."*



When We Put Our *Hearts* to It ...

Prayer, Intention, Meditation

Maharishi Effect



3) Union Territory of Delhi—Decreased Crime (1980–1981) A study in India involved time series analysis of the impact on crime rate in New Delhi of a group of TM and TM-Sidhi experts attending a Vedic Science Course there from November 1980 to early April 1981. The impact of the group was assessed on a time series comprising 304 observations of daily crime totals for Delhi from June 1980 to March 1981. After weekly, monthly, and other cycles and trends were removed from the time series, the estimated impact of the group was highly statistically significant ($p < .0001$), indicating a decrease in crime by 11% from the pre-intervention average. The size and statistical significance of the intervention parameters proved to be highly robust to alternative specifications of the noise model. This reduction in Delhi's crime rate could not be accounted for by changes in governmental policies. A detailed analysis by an Indian police official showed that there were no changes in local police policy, no special drives on crime, no systematic transfer of police staff, and no apparent change in the number of criminals through externment or court clearance (Dillbeck, Cavanaugh, Glenn, Orme-Johnson, & Mittlefehldt, 1987).

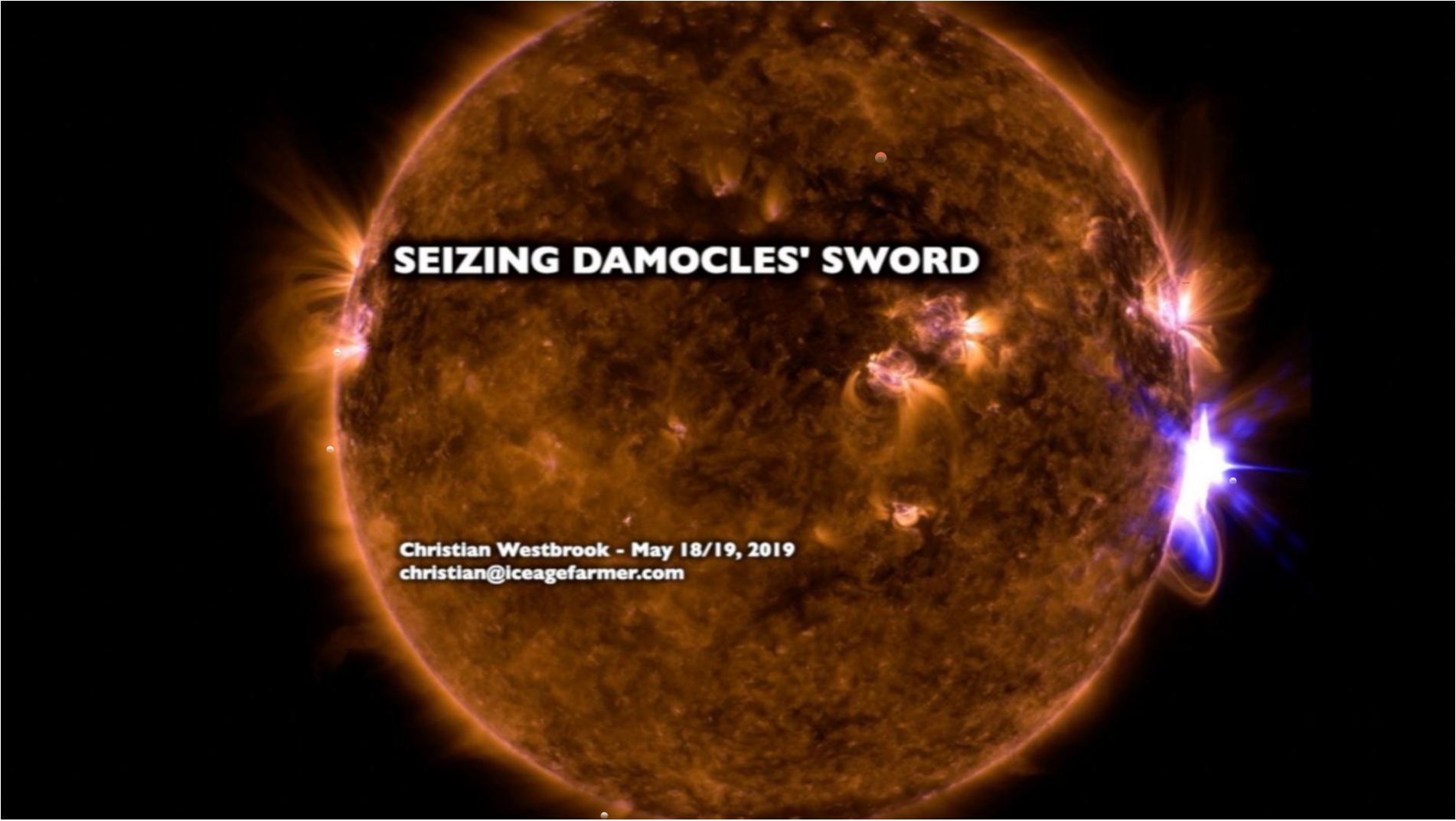
8) Washington, D.C.—Decreased Violent Crime (1993) This study was a prospective experiment in which a group of approximately 4,000 participants in the Transcendental Meditation and TM-Sidhi programs assembled in Washington, D.C., from June 7 to July 30, 1993. The hypothesis that levels of violent crime in the District of Columbia would fall substantially during the Demonstration Project was posited with a 27 member Project Review Board comprising independent scientists and leading citizens. The Board approved the research protocol and monitored the research process. The District of Columbia Metropolitan Police Department (DCMPD) provided weekly crime data from a database used for their FBI Uniform Crime Reports. The study statistically controlled for the effects of weather variables, daylight, historical crime trends and annual patterns in the District of Columbia, as well as trends in neighboring cities.

Time series analysis of 1993 data showed that homicides, rapes and assaults (HRA) crimes dropped significantly during the Demonstration Project, corresponding with increases in the size of the group. The maximum decrease was 23.3%, $p < 2 \times 10^{-9}$, (24.6% using a longer baseline, with 1988–1993 data, $p < 3 \times 10^{-5}$), coincident with the peak number of participants in the group during the final week of the assembly. No significant decreases in HRA crimes were found during the same period in each of the five previous years. Nor could the effect of the coherence-creating group on reducing HRA crimes be accounted for by additional police staffing. The results for HRA crime were highly robust to alternative time series model specifications, and showed that the effect of the group size was cumulative and persisted after the Demonstration Project ended. Calculation of the steady state gain based on

Indigenous Accounts of Environmental Stewardship in Light of the Theory and Language of Maharishi Vedic Science

Lee Fergusson^{1a}, David Kettle^{2b}, Geoffrey Wells^{3a}

According to Sharma (2015, p. 2), Vedic knowledge “urges people to pursue the path of ethical and sustainable economy, which coincides with the philosophy of ecological economics for sustainable development”. He maintains that the sole purpose of expanding the material wealth of individuals, which lies at the core of the Western exploitation model, can be contrasted to the Vedic approach which promotes the well-being of all life on earth, specifically pointing to the fact that Vedic approaches identify all living beings as ‘children of the earth’, and cites *Yajur Veda* and the *Upanishads* which encourage the maintenance of biodiversity. Sharma (2015, p. 4) also maintains the Vedic practice of “worshipping the field is a sign of gratitude towards the earth” and a marker of environmental stewardship, and Ranugedevi (2012, p. 2) suggests that the Vedic approach to the environment is based on the

A large, textured orange sphere, possibly representing a planet or a celestial body, dominates the center of the image. The sphere has a mottled, cratered surface with several bright, glowing spots. To the right of the sphere, there is a bright blue light source, possibly a star or a distant galaxy, emitting a strong blue glow and lens flare. The background is black, making the orange sphere and blue light stand out prominently.

SEIZING DAMOCLES' SWORD

Christian Westbrook - May 18/19, 2019
christian@iceagefarmer.com



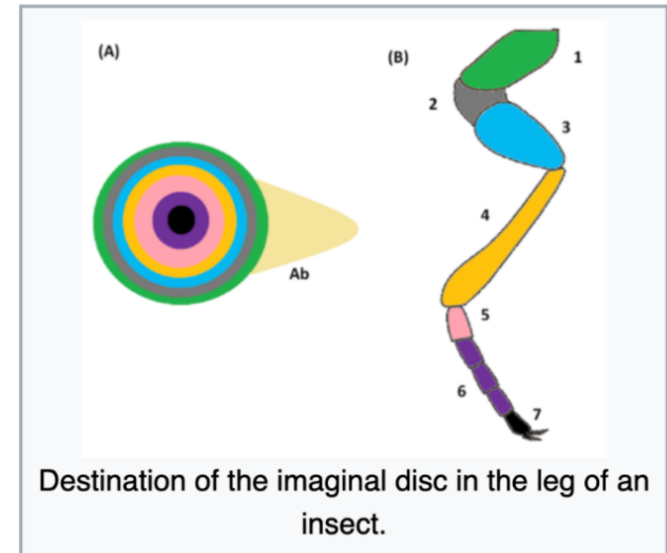
You Are Powerful

Imaginal Cells

An **imaginal disc** is one of the parts of a **holometabolous insect larva** that will become a portion of the outside of the **adult insect** during the **pupal transformation**.^[1] Contained within the body of the larva, there are pairs of discs that will form, for instance, the **wings** or **legs** or **antennae** or other structures in the adult. The role of the imaginal disc in insect development was first elucidated by **Jan Swammerdam**.^[2]

During the pupal stage, many larval structures are broken down, and adult structures, including the discs, undergo rapid development. Each disc everts and elongates, with the central portion of the disc becoming the distal part of whichever appendage it is forming: the wing, leg, antenna etc.. During the larval stage, the cells in the growing disc appear undifferentiated, but their developmental fate in the adult is already determined.^[3]

Imaginal disc



Destination of the imaginal disc in the leg of an insect.

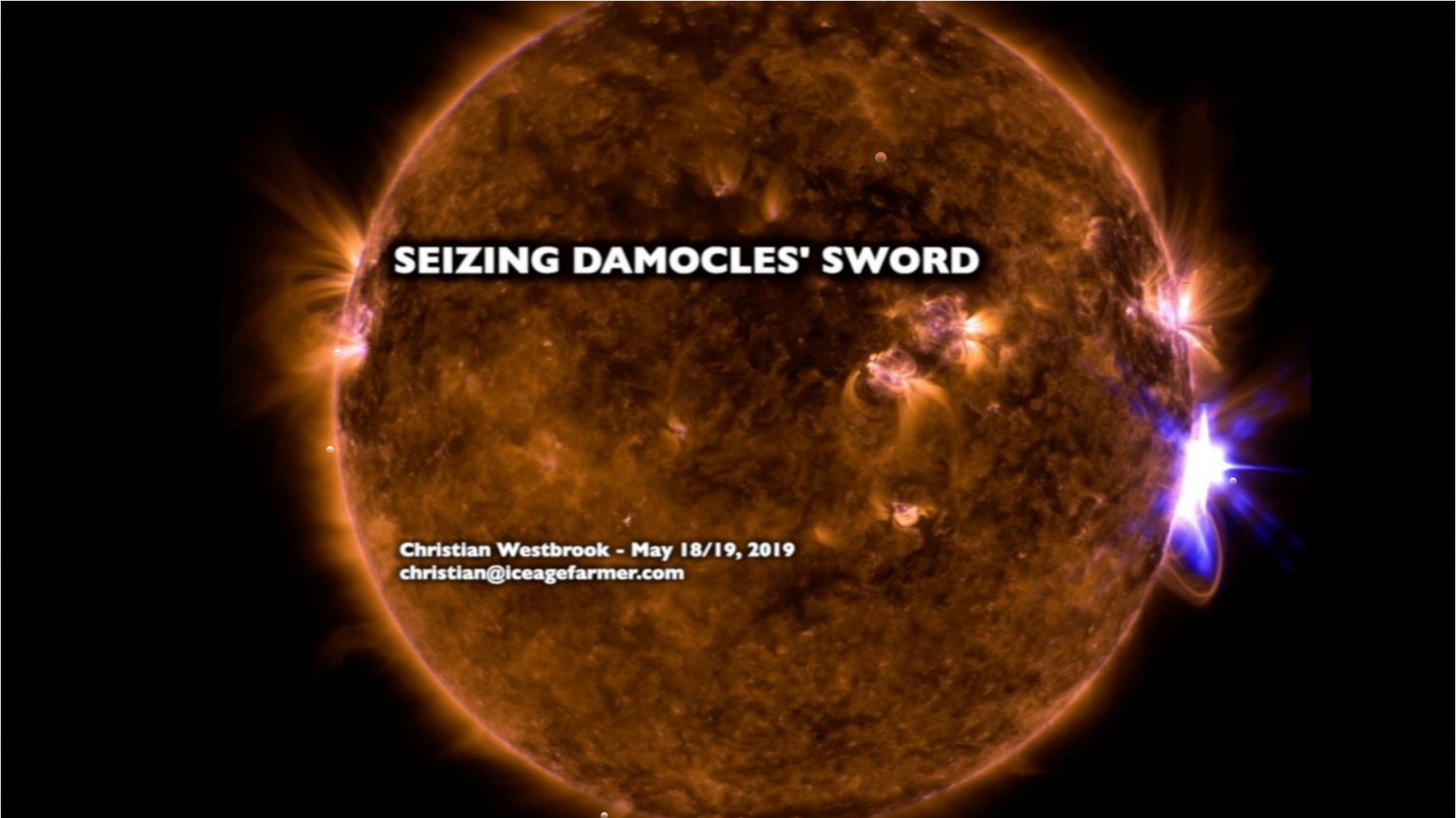
Be the Change

Grow abundant, nutritive food.

Research and educate.

Build anti-fragile communities.

Be the imaginal cells!

A large, textured orange sphere, possibly representing a planet or a celestial body, dominates the center of the image. The sphere has a mottled, cratered surface. On the right side, a bright blue-white light source, resembling a star or a distant galaxy, emits a strong glow and lens flare. The background is black, making the orange sphere and the blue light stand out.

SEIZING DAMOCLES' SWORD

Christian Westbrook - May 18/19, 2019
christian@iceagefarmer.com